



مستشفى الملك فيصل التخصصي ومركز الأبحاث
King Faisal Specialist Hospital & Research Centre
مؤسسة عامة Gen. Org.



2017 RADIATION IN MEDICINE SYMPOSIUM & WORKSHOPS

KING FAISAL SPECIALIST HOSPITAL & RESEARCH CENTRE, RIYADH, SAUDI ARABIA

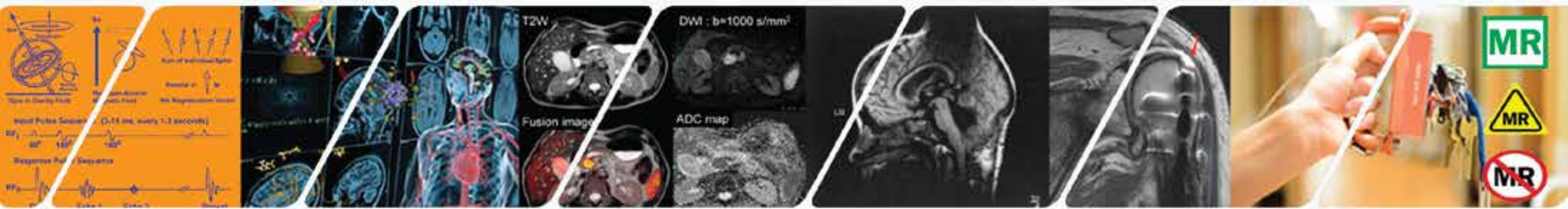
15 - 19 JUMADA AL AWAL 1438 / 12 - 16 FEBRUARY 2017

MRI: BASICS AND SAFETY

SUNDAY, 12 FEBRUARY 2017

VENUE: POST-GRADUATE CENTRE, KFSH&RC, RIYADH, SAUDI ARABIA

Track



PROGRAM HIGHLIGHTS

- Introduction to MRI physics
- MRI physics, sequences (advanced)
- MRI artifacts
- Quantitative MRI biomarkers (Diffusion and perfusion)
- Gadolinium based contrast safety
- MRI safety
- fMRI (Mind-Reading and Neurofeedback)

SPEAKERS/INSTRUCTORS



ABDULLAH ABU JAMEA, PhD
Assistant Professor & Consultant
Medical Physicist, Department of
Radiology & Medical Imaging,
King Khaled University Hospital
King Saud University, Riyadh, KSA



OMER DEMIRKAYA, PhD, DABSNM
Senior Scientist,
Head, Imaging Physics Section
Biomedical Physics Department
King Faisal Specialist Hospital &
Research Centre, Riyadh, KSA



ABDULLAH AL HOTI, MSc
Education Coordinator, Clinical
Department, Medical Imaging
King Abdulaziz Medical City
Riyadh, KSA



METAB ALKUBEYER, MD
Consultant Body MRI &
Imaging Informaticist,
King Khalid University Hospital
Riyadh, KSA



AHMED MASAWI, MSc
Senior Technical Specialist,
Biomedical Physics Department
King Faisal Specialist Hospital
& Research Centre, Riyadh, KSA



RAFAAT MOHTASIB, PhD
Post-Doctoral Fellow,
Biomedical Physics Department
King Faisal Specialist Hospital &
Research Centre, Riyadh, KSA



MAMDOH SAAD ALOBAIDY, MD
Associate Consultant,
Radiology Department
King Faisal Specialist Hospital &
Research Centre, Riyadh, KSA



REGISTRATION FEE

EARLY REGISTRATION (until 5 February 2017) : SR300 / \$80 | LATE REGISTRATION (starting 6 February 2017) : SR400 / \$107

CHAIR: Ahmed Masawi, MSc | Email: amasawi@kfshrc.edu.sa | Tel. No.: 0112162919 ext. 48413

For more information, please contact Ms. Josephine Veridiano, Biomedical Physics Department, MBC-03
Email: josfin@kfshrc.edu.sa, Phone No.: +966 (11) 4427879, Fax No.: +966 (11) 4424777

www.radmed.org



TRAINING &
EDUCATION